



UCSD

University of California,
San Diego

2001 - 2002



■ DEGREES Conferred



Profile
of
Degree
Recipients

Office of Student Research & Information
Student Affairs

<http://ugr8.ucsd.edu>

DEGREES CONFERRED

Profile of Degree Recipients

2001 - 2002

University of California, San Diego

William B. Armstrong, Ph.D.
Director

Heidi M. Carty, Ph.D.
Assistant Director

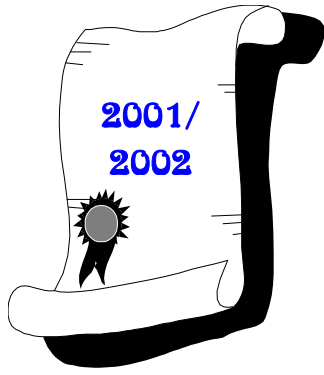
Greg Martin
Programmer Analyst

Jason R. Thornton
Research Analyst

Student Research & Information
Student Affairs
University of California, San Diego
La Jolla, CA 92093-0088
<http://ugr8.ucsd.edu>

Highlights

- Reaching a record high, UC San Diego awarded a combined total of 4,873 undergraduate, graduate and medical degrees during the 2001/2002 academic year.
- For the fourth consecutive year, UCSD awarded a record high number of undergraduate degrees. In 2001/2002 this number rose to 3,922 undergraduate recipients.
- Of the 3,922 undergraduate degrees awarded in 2001/2002, the largest percentage (49%; 1,916) were granted to social science majors.
- While the majority (54%) of undergraduate degrees were awarded to females, the majority of graduate (M.A./M.S., 62%; Ph.D., 60%) and medical degrees (57%) were awarded to males.
- More than one-half (53%) of all first-time freshmen who earned a bachelor's degree at UCSD did so in four years; almost three-quarters (70%) graduated within 13 quarters or just over four years, respectively.
- On average, transfer students took three years to complete their bachelor degree requirements at UCSD. Over one-half (58%) of the transfer students graduated within eight quarters.
- Sixty-two percent of the 2001/2002 undergraduate degree recipients graduated with a grade point average of 3.0 ('B') or better; roughly one in five (19%) graduated with a grade point average of 3.5 ('B+') or better. Overall, the average GPA was 3.11 for undergraduate recipients in 2001/2002.



UC SAN DIEGO AWARDED A TOTAL OF 4,873 UNDERGRADUATE, GRADUATE AND MEDICAL DEGREES DURING THE 2001/2002 ACADEMIC YEAR.

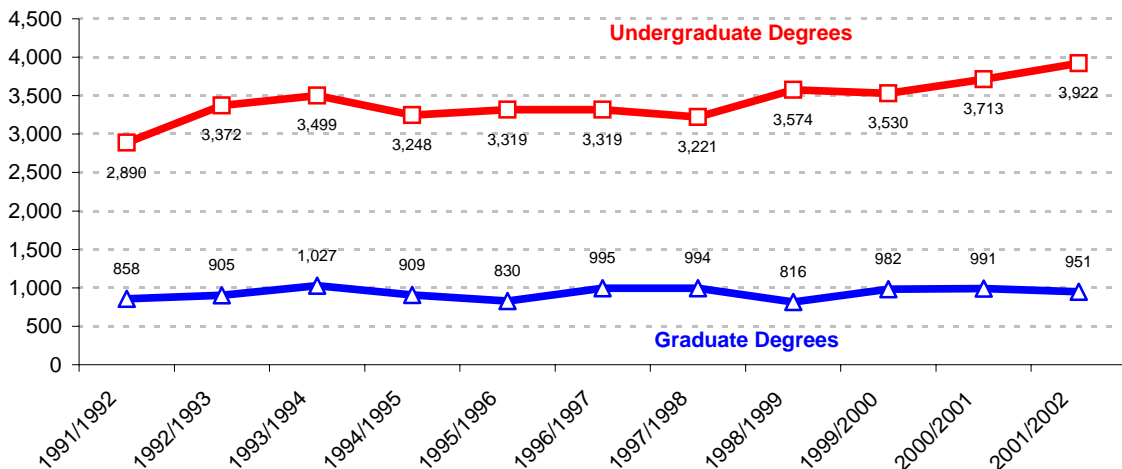
Degrees by the Numbers: All Degree Types

Award Year	Bachelors	Masters	Candidate in Phil.	Doctor of Philosophy	Doctor of Medicine	Total
2001/2002	3,922	495	117	278	61	4,873
2000/2001	3,713	423	147	285	136	4,704
1999/2000	3,530	408	150	294	130	4,512
1998/1999	3,574	358	120	303	35	4,390
1997/1998	3,221	404	178	310	102	4,215
1996/1997	3,319	364	148	281	202	4,314
1995/1996	3,319	384	149	259	38	4,149
1994/1995	3,248	392	137	274	106	4,157
1993/1994	3,499	459	143	285	140	4,526
1992/1993	3,372	408	148	280	69	4,277
1991/1992	2,890	356	156	227	119	3,748



For the second consecutive year, a record high number of degrees were awarded by UCSD. The number of bachelor's degrees awarded hit a peak high of 3,922 in 2001/2002.

Trends in Degrees Awarded





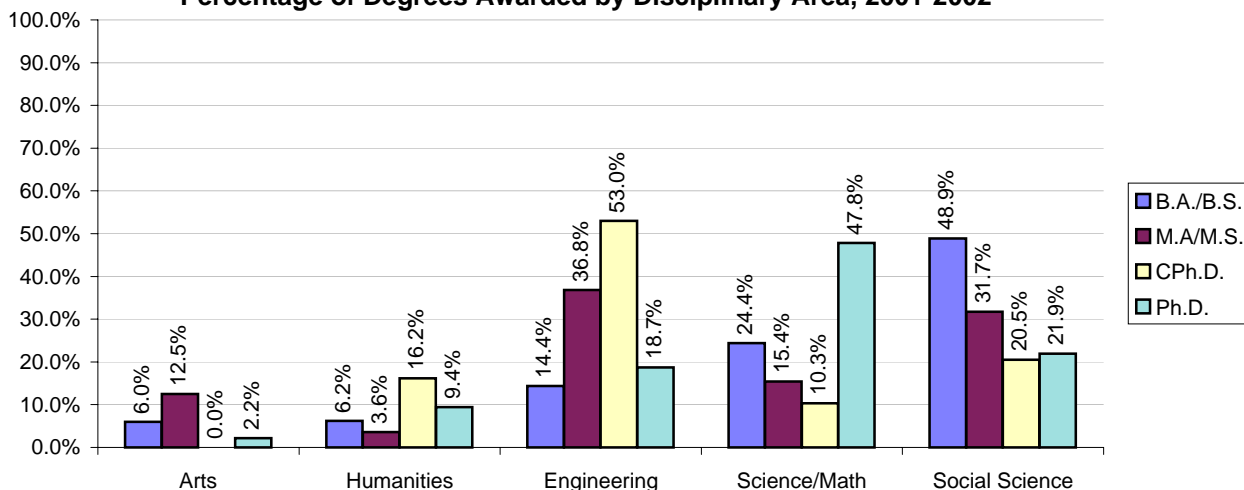
Student Characteristics: All Degree Types

The majority of bachelor's degrees were awarded to females (54%).

Just under one-half (49%) of all bachelor's degrees were awarded to social science majors. Just under one-half (48%) of all Ph.D.'s were awarded to students in the fields of science/math.

Background Characteristics	B.A./B.S. N=3,922	M.A./M.S. N=495	CPh.D. N=117	Ph.D. N=278	M.D. N=61
Gender					
Male	46.1%	62.4%	60.7%	60.4%	57.4%
Female	53.9%	37.6%	39.3%	39.6%	42.6%
Ethnicity					
African Am.	1.5%	1.8%	0.9%	4.0%	0.0%
Asian	26.5%	11.7%	7.7%	10.1%	44.3%
Mexican Am.	7.2%	3.0%	2.6%	4.3%	1.6%
Filipino	4.9%	1.2%	0.0%	1.1%	4.9%
Latino	2.3%	2.2%	2.6%	2.2%	4.9%
Native Am.	0.6%	0.8%	0.0%	0.4%	0.0%
Caucasian	42.5%	52.1%	46.2%	50.0%	37.7%
Other	14.5%	27.1%	40.2%	28.1%	6.6%
Disciplinary Area					
Arts	6.0%	12.5%	0.0%	2.2%	0.0%
Humanities	6.2%	3.6%	16.2%	9.4%	0.0%
Engineering	14.4%	36.8%	53.0%	18.7%	0.0%
Science/Math	24.4%	15.4%	10.3%	47.8%	100.0%
Social Science	48.9%	31.7%	20.5%	21.9%	0.0%
Dbl/Special	0.2%	0.0%	0.0%	0.0%	0.0%
College					
Revelle	18.5%	NA	NA	NA	NA
John Muir	23.6%	NA	NA	NA	NA
Thurgood Marshall	20.2%	NA	NA	NA	NA
Earl Warren	25.0%	NA	NA	NA	NA
Eleanor Roosevelt	12.8%	NA	NA	NA	NA

Percentage of Degrees Awarded by Disciplinary Area, 2001-2002



Trends in Time-to-Degree¹: Academic Performance

Academic Performance	Award Year									
	'93/'94	'94/'95	'95/'96	'96/'97	'97/'98	'98/'99	'99/'00	'00/'01	'01/'02	

Bachelor Degree Recipients Who Entered From High School

Average Time-to-Degree	13.7	13.4	13.4	13.3	13.3	13.3	13.4	13.1	13.3
Median Time-to-Degree	13.0	12.0	12.0	13.0	12.0	12.0	13.0	12.0	12.0
Average Units	204	203	205	204	204	204	205	205	205
GPA at Graduation	3.14	3.17	3.17	3.15	3.14	3.14	3.14	3.16	3.14
% with GPA = 3.0 - 3.5	46%	46%	46%	43%	44%	42%	42%	45%	45%
% with GPA ≥ 3.5	19%	21%	22%	22%	21%	22%	22%	22%	20%

Bachelor Degree Recipients Who Entered from a Two-Year Community College

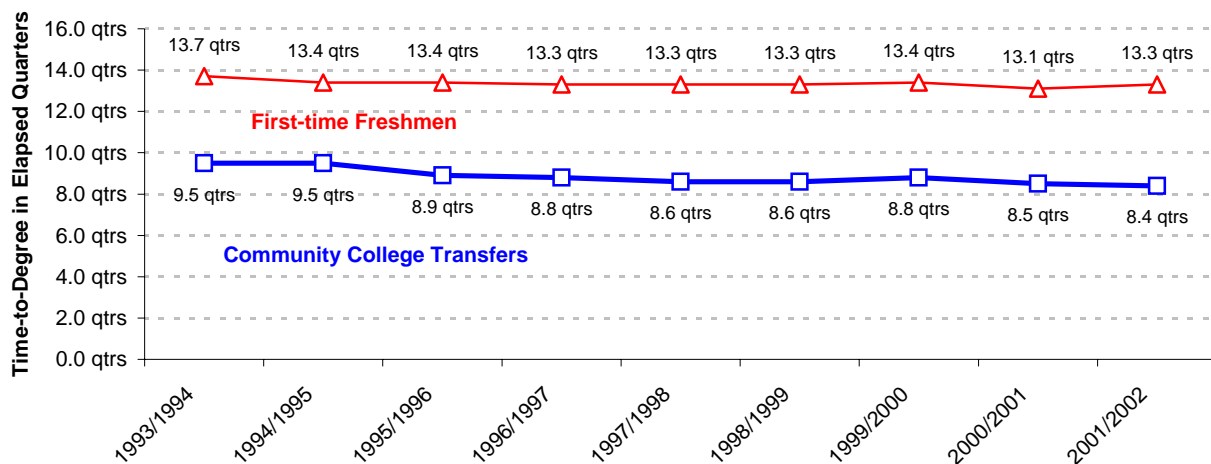
Average Time-to-Degree	9.5	9.5	8.9	8.8	8.6	8.6	8.8	8.5	8.4
Median Time-to-Degree	9.0	9.0	9.0	9.0	9.0	8.0	8.0	8.0	7.0
Average Units	208	211	208	210	209	207	207	207	205
GPA at Graduation	3.02	3.02	3.03	3.01	3.03	3.04	3.01	3.05	3.03
% with GPA = 3.0 - 3.5	36%	37%	36%	35%	37%	36%	34%	37%	40%
% with GPA ≥ 3.5	16%	15%	18%	17%	17%	18%	17%	16%	15%

Total Bachelor Degree Recipients

Average Units	205	206	206	206	206	205	206	206	205
GPA at Graduation	3.09	3.10	3.11	3.10	3.10	3.11	3.10	3.12	3.11
% with GPA = 3.0 - 3.5	41%	41%	42%	40%	41%	41%	40%	42%	43%
% with GPA ≥ 3.5	18%	19%	20%	20%	20%	20%	20%	20%	19%

¹Time-to-Degree is reported in elapsed quarters from first enrollment date to graduation. Only the records of students who enter UCSD in the Fall quarter are included in time-to-degree calculations. An academic year is defined as three quarters; twelve quarters equal four years. Summer degrees are combined with Fall degrees and represent one quarter.

Time-to-Degree Trends



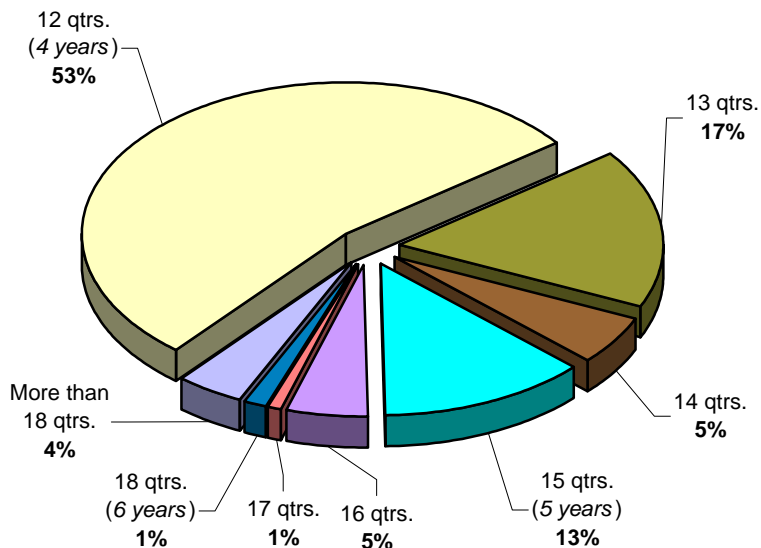
Nominal Time-to-Degree

The majority (53%) of first-time freshmen earning a bachelor's degree at UCSD did so in four years; almost three-quarters (70%) graduated within 13 quarters or just over four years.

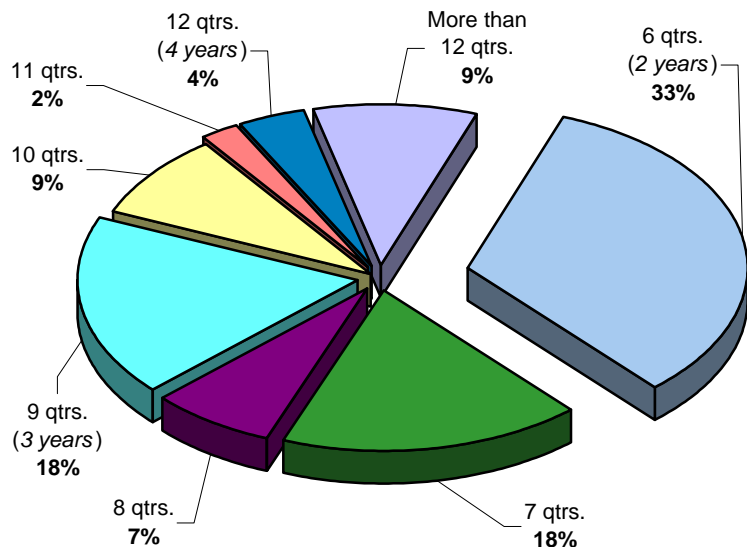
First-Time Freshmen

Cumulative Frequency:

- 53% graduated within 12 qtrs.
- 70% graduated within 13 qtrs.
- 75% graduated within 14 qtrs.
- 88% graduated within 15 qtrs.
- 94% graduated within 16 qtrs.
- 95% graduated within 17 qtrs.
- 96% graduated within 18 qtrs.



On average, transfer students took three years to complete their bachelor degree requirements at UCSD; one-third graduated within two years (6 quarters).



Community College Transfer

Cumulative Frequency:

- 33% graduated within 6 qtrs.
- 51% graduated within 7 qtrs.
- 58% graduated within 8 qtrs.
- 76% graduated within 9 qtrs.
- 85% graduated within 10 qtrs.
- 87% graduated within 11 qtrs.
- 91% graduated within 12 qtrs.



Characteristics of Bachelor Degree Recipients: 2001/2002

Student Characteristics	N	%	GPA Mean	Academic Profile		Units Mean	Time-to-Degree	
				% GPA 3.0 - 3.5	% GPA ≥ 3.5		Freshmen Mean	C.C. Transfer ² Mean
Gender								
Male	1,809	46.1%	3.07	42%	17%	208	13.8	8.9
Female	2,113	53.9%	3.14	45%	20%	203	12.8	7.9
Ethnicity								
African Am.	58	1.5%	2.96	35%	12%	204	14.4	10.0
Asian	1,039	26.5%	3.03	40%	14%	206	13.4	8.8
Mexican Am.	284	7.2%	2.94	34%	11%	201	14.3	8.5
Filipino	191	4.9%	2.96	37%	9%	209	13.2	8.5
Latino	90	2.3%	3.12	47%	20%	201	12.8	8.4
Native Am.	25	0.6%	3.00	40%	12%	210	14.8	8.6
Caucasian	1,667	42.5%	3.20	47%	24%	205	13.1	8.2
Other	568	14.5%	3.14	47%	18%	204	12.8	8.1
Disciplinary Area								
Arts	236	6.0%	3.25	52%	25%	202	13.6	8.5
Humanities	244	6.2%	3.16	43%	22%	203	13.7	8.3
Engineering	563	14.4%	3.08	42%	16%	225	13.9	9.8
Science/Math	957	24.4%	3.10	39%	22%	211	13.3	9.1
Social Science	1,916	48.9%	3.09	45%	17%	197	13.0	7.7
Dbl/Special	6	0.2%	3.42	--	--	198	12.8	--
College								
Revelle	725	18.5%	3.06	38%	18%	216	13.6	9.8
Muir	925	23.6%	3.16	45%	22%	203	13.1	8.0
Marshall	792	20.2%	3.08	47%	15%	199	13.3	8.1
Warren	979	25.0%	3.11	41%	19%	205	13.1	8.3
Roosevelt	501	12.8%	3.13	48%	17%	205	13.3	9.2
School Type								
High School	2,780	70.9%	3.14	45%	20%	205	13.3	--
2yr College	1,083	27.6%	3.03	40%	15%	205	--	8.4
4yr College/Univ.	43	1.1%	3.15	44%	21%	207	--	--
Unknown	16	0.4%	2.76	50%	--	215	--	--
Total Population								
	3,922	100.0%	3.11	43%	19%	205	13.3	8.4

Time-to-degree for bachelor degree recipients varies by disciplinary area. In general, engineering majors require more time to complete their degree requirements than non-engineering majors.

On average, first-time freshmen take just over four years (13 quarters) to graduate. Community college transfer students take just under three years or 8 quarters.

²For Transfer students, time-to-degree is calculated only for those students who matriculate from a two-year community college (C.C.). The typical community college transfer student enters UCSD with 90 units of transferable academic credit.

Over sixty percent (62%) of the undergraduate degree recipients graduated with a grade point average of 3.0 ('B') or better; approximately one in five graduated with a grade point average of 'B+' or better and an average of 205 units.



Profile of Bachelor Degree Recipients Majoring in the Arts: 2001/2002

Student Characteristics	N	%	GPA Mean	Academic Profile		Units Mean	Time-to-Degree	
				% GPA 3.0 - 3.5	% GPA ≥ 3.5		Freshmen Mean	C.C. Transfer Mean
Gender								
Male	119	50.4%	3.22	48%	26%	200	13.8	10.2
Female	117	49.6%	3.28	56%	25%	204	13.4	7.1
Ethnicity								
African Am.	5	2.1%	3.10	40%	20%	193	12.5	22.0
Asian	58	24.6%	3.15	57%	12%	203	14.0	8.4
Mexican Am.	23	9.7%	3.11	35%	30%	207	15.0	10.6
Filipino	5	2.1%	3.31	40%	40%	197	12.3	7.5
Latino	6	2.5%	3.24	50%	17%	209	12.5	11.0
Native Am.	1	0.4%	3.34	100%	0%	202	--	10.0
Caucasian	96	40.7%	3.36	56%	34%	200	13.5	7.8
Other	42	17.8%	3.21	48%	21%	202	13.0	7.6
College								
Revelle	23	9.7%	3.02	48%	13%	208	14.5	14.3
Muir	89	37.7%	3.32	52%	30%	204	13.2	9.0
Marshall	60	25.4%	3.22	55%	22%	198	13.5	7.6
Warren	37	15.7%	3.23	43%	30%	197	14.5	7.8
Roosevelt	27	11.4%	3.31	63%	22%	208	13.2	9.3
School Type								
High School	153	64.8%	3.21	56%	22%	201	13.6	--
2yr College	78	33.1%	3.31	44%	35%	204	--	8.5
4yr College/Univ.	2	0.8%	3.30	100%	0%	201	--	--
Unknown	3	1.3%	3.19	67%	0%	220	--	--
Total Arts								
	236	100.0%	3.25	52%	25%	202	13.6	8.5

The largest number of students receiving a bachelor's degree in the Arts were enrolled in Muir college.

Relative to other disciplinary areas, a larger percentage of arts majors graduated with a GPA of 'B' or better. The average GPA was 3.25.

Bachelor Degrees in the Arts: Trends Profile - 1992/1993 to 2000/2001

Award Year	N	%	GPA Mean	% GPA 3.0 - 3.5	% GPA ≥ 3.5	Units Mean	Freshmen Mean	C.C. Transfer Mean
2000/2001	214	100.0%	3.30	51%	31%	206	13.5	8.1
1999/2000	147	100.0%	3.26	47%	28%	205	13.4	8.4
1998/1999	156	100.0%	3.26	60%	23%	204	13.5	7.7
1997/1998	123	100.0%	3.28	56%	28%	210	13.6	8.4
1996/1997	168	100.0%	3.27	51%	29%	210	13.6	8.9
1995/1996	161	100.0%	3.25	45%	30%	211	13.2	9.4
1994/1995	145	100.0%	3.28	52%	27%	207	13.7	9.7
1993/1994	188	100.0%	3.22	50%	25%	210	14.1	9.2
1992/1993	140	100.0%	3.20	50%	21%	211	14.1	10.3

Humanities

Profile of Bachelor Degree Recipients Majoring in the Humanities: 2001/2002



Student Characteristics	N	%	GPA Mean	Academic Profile		Units Mean	Time-to-Degree	
				% GPA 3.0 - 3.5	% GPA ≥ 3.5		Freshmen Mean	C.C. Transfer Mean
Gender								
Male	88	36.1%	3.16	35%	27%	201	14.2	7.7
Female	156	63.9%	3.16	47%	19%	204	13.5	8.6
Ethnicity								
African Am.	5	2.0%	3.14	40%	20%	228	12.0	10.0
Asian	23	9.4%	3.11	30%	26%	208	14.7	8.5
Mexican Am.	34	13.9%	2.92	32%	9%	192	15.4	6.2
Filipino	9	3.7%	2.98	44%	0%	205	11.2	9.0
Latino	10	4.1%	3.35	40%	40%	195	13.9	6.0
Native Am.	2	0.8%	3.01	50%	0%	181	13.0	--
Caucasian	129	52.9%	3.25	45%	27%	204	13.2	8.5
Other	32	13.1%	3.13	56%	13%	207	13.6	8.5
College								
Revelle	25	10.2%	3.05	52%	4%	220	14.3	14.5
Muir	78	32.0%	3.21	47%	26%	200	13.3	7.5
Marshall	41	16.8%	3.25	46%	29%	202	13.8	8.3
Warren	39	16.0%	3.02	44%	10%	198	13.8	7.6
Roosevelt	61	25.0%	3.18	31%	26%	204	13.7	11.4
School Type								
High School	146	59.8%	3.18	40%	23%	203	13.1	--
2yr College	93	38.1%	3.15	48%	19%	203	--	8.0
4yr College/Univ.	4	1.6%	3.08	25%	25%	208	--	--
Unknown	1	0.4%	2.41	0%	0%	191	--	--
Total Humanities								
	244	100.0%	3.16	43%	22%	203	13.7	8.3

Approximately 64% of all students earning a bachelor's degree in humanities were female.

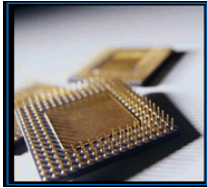
More than one-half of all students graduating with a degree in the humanities were Caucasian (53%).

Overall, 65% of humanities majors graduated with a 'B' or better grade point average; the mean GPA was 3.16.

Bachelor Degrees in the Humanities: Trends Profile - 1992/1993 to 2000/2001

Award Year	N	%	GPA Mean	% GPA 3.0 - 3.5	% GPA ≥ 3.5	Units Mean	Freshmen Mean	C.C. Transfer Mean
2000/2001	273	100.0%	3.14	48%	19%	202	13.6	7.6
1999/2000	256	100.0%	3.17	44%	24%	201	13.5	8.6
1998/1999	312	100.0%	3.19	45%	27%	201	13.4	9.2
1997/1998	291	100.0%	3.18	44%	26%	202	13.5	8.6
1996/1997	307	100.0%	3.15	48%	19%	201	12.9	8.7
1995/1996	305	100.0%	3.15	49%	21%	202	13.3	8.4
1994/1995	346	100.0%	3.18	43%	26%	202	13.0	9.3
1993/1994	376	100.0%	3.17	43%	22%	200	13.3	7.8
1992/1993	391	100.0%	3.16	45%	23%	200	13.4	8.5

Engineering



Profile of Bachelor Degree Recipients Majoring in Engineering: 2001/2002

Student Characteristics	N	%	GPA Mean	Academic Profile		Units Mean	Time-to-Degree	
				% GPA 3.0 - 3.5	% GPA ≥ 3.5		Freshmen Mean	C.C. Transfer Mean
Gender								
Male	443	78.7%	3.06	44%	14%	224	14.1	9.8
Female	120	21.3%	3.13	35%	23%	228	13.2	10.0
Ethnicity								
African Am.	6	1.1%	3.03	50%	0%	219	14.4	9.0
Asian	200	35.5%	3.02	39%	13%	224	13.9	9.6
Mexican Am.	20	3.6%	3.07	55%	15%	227	15.5	12.8
Filipino	33	5.9%	2.90	27%	9%	226	13.6	12.0
Latino	7	1.2%	3.13	57%	14%	219	12.4	9.0
Native Am.	0	0.0%	--	--	--	--	--	--
Caucasian	220	39.1%	3.16	44%	22%	226	13.9	9.7
Other	77	13.7%	3.07	46%	10%	223	13.5	9.7
College								
Revelle	121	21.5%	3.18	41%	23%	241	14.0	10.1
Muir	85	15.1%	3.13	46%	20%	223	14.1	10.5
Marshall	68	12.1%	2.93	44%	3%	220	14.2	8.8
Warren	262	46.5%	3.06	41%	15%	218	13.5	9.8
Roosevelt	27	4.8%	2.96	48%	4%	235	14.8	8.8
School Type								
High School	391	69.4%	3.11	43%	17%	222	13.3	--
2yr College	164	29.1%	3.02	41%	12%	231	--	8.1
4yr College/Univ.	6	1.1%	2.85	0%	17%	232	--	--
Unknown	2	0.4%	3.26	100%	0%	239	--	--
Total Engineering								
	563	100.0%	3.08	42%	16%	225	13.9	9.8

More than three out of every four graduating engineering students were male; approximately 39% were Caucasian and 36% were Asian.

Almost one-half (47%) of all engineering degree recipients were enrolled at Warren College.

Fifty-eight percent of engineering majors graduated with a GPA of 'B' or higher. The average GPA for graduating engineering students was 3.08.

Bachelor Degrees in Engineering: Trends Profile - 1992/1993 to 2000/2001

Award Year	N	%	GPA Mean	% GPA 3.0 - 3.5	% GPA ≥ 3.5	Units Mean	Freshmen Mean	C.C. Transfer Mean
2000/2001	540	100.0%	3.10	43%	18%	224	13.8	9.6
1999/2000	533	100.0%	3.08	39%	17%	227	13.9	10.0
1998/1999	446	100.0%	3.13	41%	20%	228	14.2	9.9
1997/1998	402	100.0%	3.12	43%	19%	230	14.2	9.8
1996/1997	398	100.0%	3.09	37%	20%	230	14.3	10.8
1995/1996	424	100.0%	3.13	41%	21%	231	14.6	10.5
1994/1995	418	100.0%	3.10	40%	17%	234	14.6	11.4
1993/1994	344	100.0%	3.12	40%	19%	237	14.9	12.0
1992/1993	399	100.0%	3.08	44%	15%	237	15.2	11.8

Science/Math



Profile of Bachelor Degree Recipients Majoring in Science and Math: 2001/2002

Student Characteristics	N	%	GPA Mean	Academic Profile		Units Mean	Time-to-Degree	
				% GPA 3.0 - 3.5	% GPA ≥ 3.5		Freshmen Mean	C.C. Transfer Mean
Gender								
Male	446	46.6%	3.09	40%	21%	212	13.8	9.7
Female	511	53.4%	3.12	39%	23%	211	12.9	8.6
Ethnicity								
African Am.	13	1.4%	2.67	8%	15%	213	16.7	14.5
Asian	278	29.0%	3.05	39%	17%	211	13.3	9.0
Mexican Am.	44	4.6%	2.84	25%	11%	212	14.1	8.9
Filipino	59	6.2%	2.96	39%	10%	212	13.1	8.3
Latino	20	2.1%	2.92	35%	10%	210	12.6	10.0
Native Am.	8	0.8%	2.99	25%	25%	225	14.3	--
Caucasian	394	41.2%	3.19	42%	26%	212	13.3	9.3
Other	141	14.7%	3.20	42%	29%	210	12.8	8.5
College								
Revelle	315	32.9%	3.14	39%	25%	216	13.4	9.7
Muir	204	21.3%	3.15	45%	23%	211	12.9	9.3
Marshall	155	16.2%	3.01	39%	16%	203	13.3	8.9
Warren	220	23.0%	3.12	36%	26%	211	13.0	8.5
Roosevelt	63	6.6%	2.96	40%	10%	217	14.3	10.2
School Type								
High School	723	75.5%	3.16	43%	24%	212	13.1	--
2yr College	224	23.4%	3.92	28%	14%	209	--	8.3
4yr College/Univ.	8	0.8%	3.21	25%	38%	224	--	--
Unknown	2	0.2%	2.17	0%	0%	231	--	--
Total Science/Math	957	100.0%	3.10	39%	22%	211	13.3	9.1

More than one-half of all science/math degrees were awarded to females.

The largest number of bachelor degree recipients majoring in science/math were enrolled at Revelle College.

Approximately 61% of science/math majors graduated with a 'B' or better GPA; twenty-two percent graduated with a GPA of 'B+' or better.

Bachelor Degrees in Science and Math: Trends Profile - 1992/1993 to 2000/2001

Award Year	N	%	GPA Mean	% GPA 3.0 - 3.5	% GPA ≥ 3.5	Units Mean	Freshmen Mean	C.C. Transfer Mean
2000/2001	1,029	100.0%	3.10	36%	23%	211	13.1	9.1
1999/2000	1,102	100.0%	3.09	37%	23%	211	13.4	9.1
1998/1999	1,160	100.0%	3.10	36%	22%	208	13.3	8.6
1997/1998	1,040	100.0%	3.11	39%	22%	210	13.4	8.7
1996/1997	1,122	100.0%	3.09	37%	21%	210	13.3	9.1
1995/1996	1,030	100.0%	3.09	39%	21%	209	13.3	9.4
1994/1995	902	100.0%	3.07	37%	19%	208	13.4	10.0
1993/1994	967	100.0%	3.06	37%	18%	209	13.9	10.4
1992/1993	802	100.0%	3.05	40%	17%	209	13.8	10.5

Social Science



Profile of Bachelor Degree Recipients Majoring in the Social Sciences: 2001/2002

Student Characteristics	N	%	GPA Mean	Academic Profile		Units Mean	Time-to-Degree	
				% GPA 3.0 - 3.5	% GPA ≥ 3.5		Freshmen Mean	C.C. Transfer Mean
Gender								
Male	709	37.0%	3.03	42%	13%	196	13.6	8.0
Female	1,207	63.0%	3.13	46%	19%	197	12.7	7.5
Ethnicity								
African Am.	28	1.5%	3.01	39%	11%	194	13.5	6.7
Asian	480	25.1%	3.01	39%	13%	197	13.1	8.3
Mexican Am.	161	8.4%	2.93	33%	8%	196	14.0	8.1
Filipino	85	4.4%	2.95	39%	8%	200	13.1	7.6
Latino	47	2.5%	3.14	51%	21%	195	12.8	7.7
Native Am.	14	0.7%	2.97	43%	7%	205	15.4	8.3
Caucasian	827	43.2%	3.18	49%	22%	197	12.8	7.5
Other	274	14.3%	3.11	49%	15%	196	12.5	7.5
College								
Revelle	240	12.5%	2.90	32%	8%	204	13.4	8.4
Muir	469	24.5%	3.13	44%	20%	196	12.9	7.3
Marshall	464	24.2%	3.09	48%	14%	195	13.0	7.9
Warren	420	21.9%	3.12	44%	19%	195	12.7	7.6
Roosevelt	323	16.9%	3.15	51%	18%	200	13.0	8.6
School Type								
High School	1,361	71.0%	3.12	45%	18%	198	13.3	--
2yr College	524	27.3%	3.02	42%	12%	195	--	9.2
4yr College/Univ.	23	1.2%	3.21	61%	17%	195	--	--
Unknown	8	0.4%	2.66	50%	0%	206	--	--
Total Social Sci.								
	1,916	100.0%	3.09	45%	17%	197	13.0	7.7

Almost two of every three students graduating with a degree in the social sciences was female.

At graduation, the average social science degree recipient had earned a GPA of 3.09; 62% had earned 'B' or better grades.

Bachelor Degrees in Social Sciences: Trends Profile - 1992/1993 to 2000/2001

Award Year	N	%	GPA Mean	% GPA 3.0 - 3.5	% GPA ≥ 3.5	Units Mean	Freshmen Mean	C.C. Transfer Mean
2000/2001	1,649	100.0%	3.11	44%	18%	197	12.8	7.8
1999/2000	1,494	100.0%	3.09	42%	18%	196	13.2	8.1
1998/1999	1,494	100.0%	3.08	42%	17%	195	12.9	7.9
1997/1998	1,362	100.0%	3.06	44%	15%	197	12.9	7.9
1996/1997	1,320	100.0%	3.09	40%	19%	196	13.1	7.8
1995/1996	1,388	100.0%	3.09	43%	18%	197	13.1	8.1
1994/1995	1,429	100.0%	3.07	42%	17%	198	13.2	8.7
1993/1994	1,597	100.0%	3.07	40%	19%	196	13.2	8.4
1992/1993	1,618	100.0%	3.04	43%	14%	195	13.2	8.6

The *Degrees Conferred* Report is an annual publication of the Office of Student Research and Information, Student Affairs, (858) 534-2382. This document is also available on the World Wide Web: <http://ugr8.ucsd.edu>

