

# Degrees Conferred

Profile of Degree Recipients

# 2007 - 2008



**University of California, San Diego**  
**Office of Student Research & Information**  
**Student Affairs**  
**[studentresearch.ucsd.edu](http://studentresearch.ucsd.edu)**

# **DEGREES CONFERRED**

## **Profile of Degree Recipients**

**2007 - 2008**

## **University of California, San Diego**

**William B. Armstrong, Ph.D.**  
Director

**Heidi M. Carty, Ph.D.**  
Principal Research Analyst

**Greg Martin**  
Programmer Analyst

**Jason R. Thornton**  
Research Analyst

**Student Research & Information**  
Student Affairs  
University of California, San Diego  
La Jolla, CA 92093-0088  
<http://studentresearch.ucsd.edu>

# Highlights

---

- UC San Diego awarded a combined total of 7,133 undergraduate, graduate and medical degrees during the 2007/2008 academic year. A record high number (N=488) of Ph.D.s were awarded in 2007/2008.
- The majority (53%) of undergraduate and graduate pharmaceutical degrees (68%) were awarded to females, while the majority of master's degrees (60%), Ph.D.s (61%) and medical degrees (58%) were awarded to males.
- UCSD awarded 5,337 undergraduate degrees in 2007/2008. Of these, the largest percentage (48%; 2,577) were granted to social science majors, followed by biology majors (21%; 1,113).
- More than one-half (57%) of all first-time freshmen who earned a bachelor's degree at UCSD did so in four years; almost three-quarters (74%) graduated within 13 quarters or just over four years, respectively.
- On average, transfer students took three years to complete their bachelor degree requirements at UCSD, over three-quarters (79%) graduated within nine quarters.
- Sixty-five percent of the 2007/2008 undergraduate degree recipients graduated with a grade point average of 3.0 ('B') or higher; approximately one in four (21%) graduated with a grade point average of 3.5 ('B+') or higher.
- The average GPA for all undergraduate degree recipients in 2007/2008 was 3.14. The average GPA for the 2007/2008 first-time freshmen graduates was 3.18. The average GPA for the 2007/2008 transfer students was 3.04.
- Relative to other disciplinary areas a larger proportion of arts majors graduated with a GPA of 'B' or better. The average GPA for arts majors was 3.35, respectively.

# All Degree Types

## 2007 / 2008

**UC San Diego Awarded a Total of 7,133 Undergraduate, Graduate and Medical Degrees During the 2007/2008 Academic Year.**

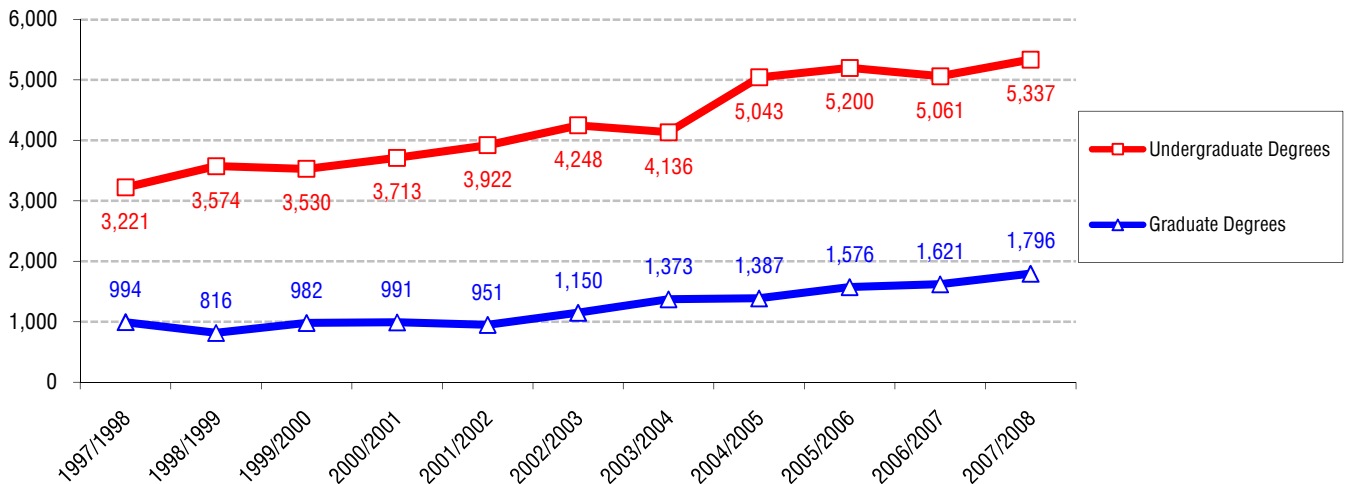
## Degrees by the Numbers



Award Year	Bachelor	Master	Candidate in Phil.	Doctor of Philosophy	Doctor of Medicine	Doctor of Pharmacy	Total
2007/2008	5,337	894	258	488	125	31	7,133
2006/2007	5,061	901	185	387	101	47	6,682
2005/2006	5,200	761	253	354	186	22	6,776
2004/2005	5,043	797	170	303	117	--	6,430
2003/2004	4,136	785	161	327	100	--	5,509
2002/2003	4,248	573	170	279	128	--	5,398
2001/2002	3,922	495	117	278	61	--	4,873
2000/2001	3,713	423	147	285	136	--	4,704
1999/2000	3,530	408	150	294	130	--	4,512
1998/1999	3,574	358	120	303	35	--	4,390
1997/1998	3,221	404	178	310	102	--	4,215

7,133 students graduated from UCSD in 2007/2008. At 488, UCSD awarded a record high number of Ph.D.s in 2007/2008.

**Trends in Degrees Awarded**





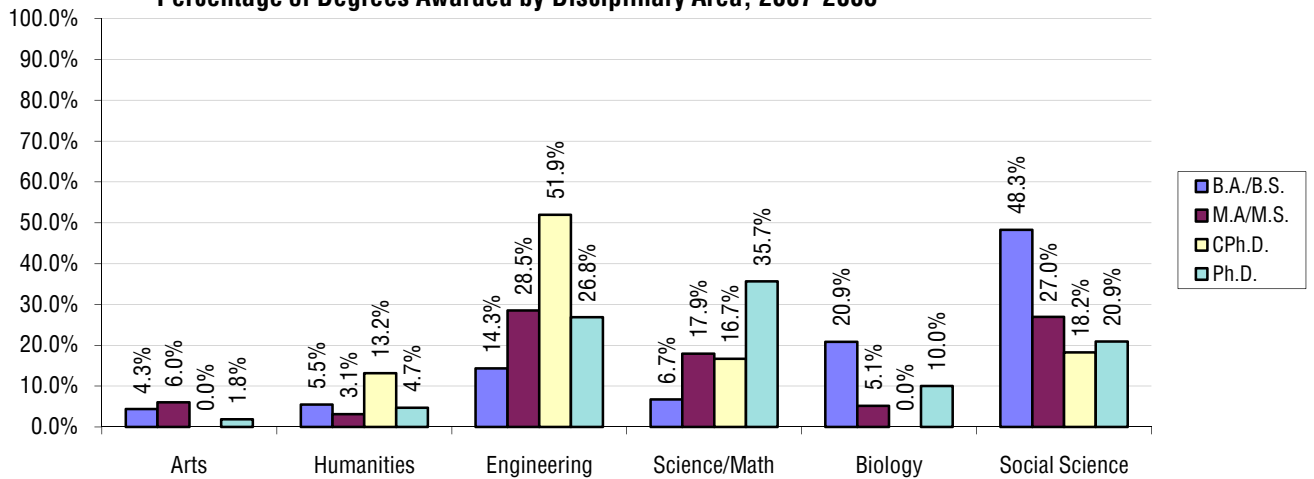
# Student Characteristics: All Degree Types 2007/2008

The majority (53%) of bachelor's degrees were awarded to females.

Almost one-half (48%) of all bachelor's degrees were awarded to social science majors. Approximately, 29% of all master's degrees were awarded to engineering majors. The largest number (36%) of degree recipients earning a Ph.D. were science/math majors.

Background Characteristics	B.A./B.S. N=5,337		M.A./M.S. N=894		CPh.D. N=258		Ph.D. N=488		M.D. N=125		Pharm. N=31		Total N=7,133	
	N	%	N	%	N	%	N	%	N	%	N	%	N	%
<b>Gender</b>														
Female	2,847	53.3%	362	40.5%	70	27.1%	189	38.7%	53	42.4%	21	67.7%	3,542	49.7%
Male	2,490	46.7%	532	59.5%	188	72.9%	299	61.3%	72	57.6%	10	32.3%	3,591	50.3%
<b>Ethnicity</b>														
African Am.	55	1.0%	13	1.5%	1	0.4%	5	1.0%	1	0.8%	0	0.0%	75	1.1%
Asian	1,933	36.2%	164	18.3%	24	9.3%	36	7.4%	46	36.8%	11	35.5%	2,214	31.0%
Mexican Am.	386	7.2%	31	3.5%	5	1.9%	15	3.1%	2	1.6%	0	0.0%	439	6.2%
Filipino	256	4.8%	15	1.7%	1	0.4%	7	1.4%	1	0.8%	3	9.7%	283	4.0%
Latino	127	2.4%	24	2.7%	12	4.7%	13	2.7%	0	0.0%	1	3.2%	177	2.5%
Native Am.	21	0.4%	6	0.7%	0	0.0%	3	0.6%	6	4.8%	0	0.0%	36	0.5%
Caucasian	1,770	33.2%	448	50.1%	116	45.0%	243	49.8%	35	28.0%	14	45.2%	2,626	36.8%
Other	789	14.8%	193	21.6%	99	38.4%	166	34.0%	34	27.2%	2	6.5%	1,283	18.0%
<b>Disciplinary Area</b>														
Arts	232	4.3%	54	6.0%	0	0.0%	9	1.8%	0	0.0%	0	0.0%	295	4.1%
Humanities	291	5.5%	28	3.1%	34	13.2%	23	4.7%	0	0.0%	0	0.0%	376	5.3%
Engineering	763	14.3%	255	28.5%	134	51.9%	131	26.8%	0	0.0%	0	0.0%	1,283	18.0%
Science/Math	360	6.7%	160	17.9%	43	16.7%	174	35.7%	125	100.0%	31	100.0%	893	12.5%
Biology	1,113	20.9%	46	5.1%	0	0.0%	49	10.0%	0	0.0%	0	0.0%	1,208	16.9%
Social Science	2,577	48.3%	241	27.0%	47	18.2%	102	20.9%	0	0.0%	0	0.0%	2,967	41.6%
DbI/Special	1	0.0%	0	0.0%	0	0.0%	0	0.0%	0	0.0%	0	0.0%	1	0.0%
Management	0	0.0%	110	12.3%	0	0.0%	0	0.0%	0	0.0%	0	0.0%	110	1.5%
<b>College</b>														
Revelle	854	16.0%	NA	NA	NA	NA	NA	NA	NA	NA	NA	NA	NA	NA
John Muir	1,031	19.3%	NA	NA	NA	NA	NA	NA	NA	NA	NA	NA	NA	NA
Thurgood Marshall	1,001	18.8%	NA	NA	NA	NA	NA	NA	NA	NA	NA	NA	NA	NA
Earl Warren	1,125	21.1%	NA	NA	NA	NA	NA	NA	NA	NA	NA	NA	NA	NA
Eleanor Roosevelt	818	15.3%	NA	NA	NA	NA	NA	NA	NA	NA	NA	NA	NA	NA
Sixth	508	9.5%	NA	NA	NA	NA	NA	NA	NA	NA	NA	NA	NA	NA

**Percentage of Degrees Awarded by Disciplinary Area, 2007-2008**

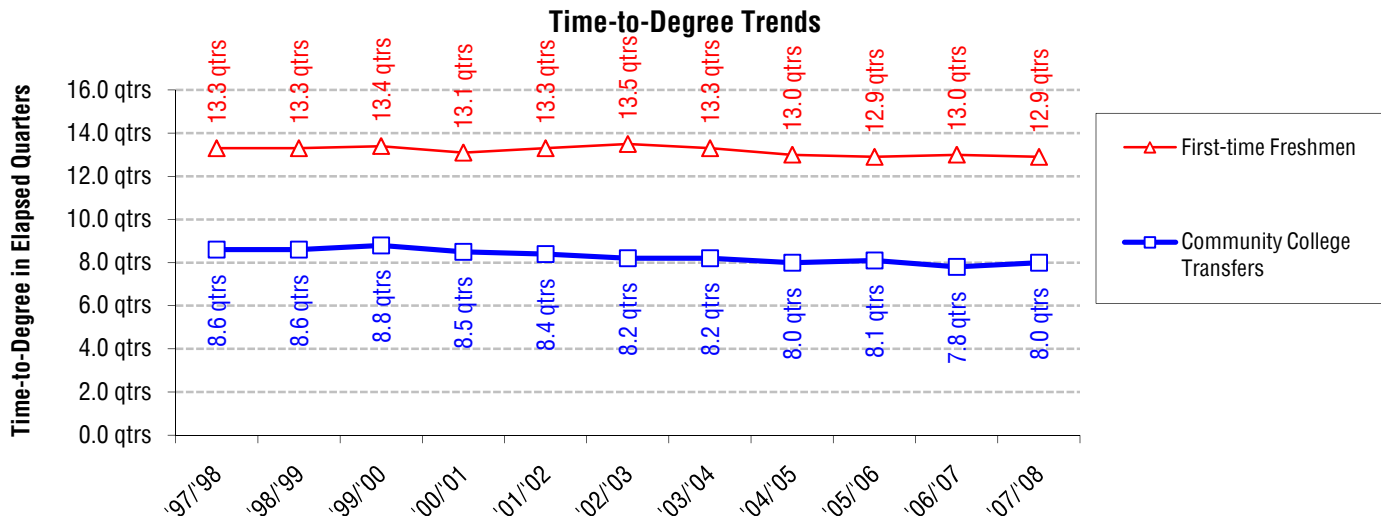


# Bachelor Degrees

## Trends in Time-to-Degree<sup>1</sup>: Academic Performance

Academic Performance	Award Year										
	'97/'98	'98/'99	'99/'00	'00/'01	'01/'02	'02/'03	'03/'04	'04/'05	'05/'06	'06/'07	'07/'08
<b>Bachelor Degree Recipients Who Entered From High School</b>											
Average Time-to-Degree	13.3	13.3	13.4	13.1	13.3	13.5	13.3	13.0	12.9	13.0	12.9
Median Time-to-Degree	12.0	12.0	13.0	12.0	12.0	12.0	12.0	12.0	12.0	12.0	12.0
Average Units	204	204	205	205	205	207	209	210	211	213	213
GPA at Graduation	3.14	3.14	3.14	3.16	3.14	3.16	3.19	3.19	3.20	3.17	3.18
% with GPA = 3.0 - 3.5	44%	42%	42%	45%	45%	43%	43%	44%	43%	43%	43%
% with GPA $\geq$ 3.5	21%	22%	22%	22%	20%	23%	25%	26%	26%	25%	25%
<b>Bachelor Degree Recipients Who Entered From a Two-Year Community College</b>											
Average Time-to-Degree	8.6	8.6	8.8	8.5	8.4	8.2	8.2	8.0	8.1	7.8	8.0
Median Time-to-Degree	9.0	8.0	8.0	8.0	7.0	6.0	6.0	6.0	6.0	6.0	6.0
Average Units	209	207	207	207	205	206	205	206	206	205	206
GPA at Graduation	3.03	3.04	3.01	3.05	3.03	3.04	3.06	3.04	3.06	3.06	3.04
% with GPA = 3.0 - 3.5	37%	36%	34%	37%	40%	36%	37%	39%	36%	37%	37%
% with GPA $\geq$ 3.5	17%	18%	17%	16%	15%	17%	20%	17%	19%	19%	18%
<b>Total Bachelor Degree Recipients</b>											
Average Units	206	205	206	206	205	207	208	209	210	210	211
GPA at Graduation	3.10	3.11	3.10	3.12	3.11	3.12	3.15	3.14	3.16	3.14	3.14
% with GPA = 3.0 - 3.5	41%	41%	40%	42%	43%	41%	41%	42%	41%	41%	41%
% with GPA $\geq$ 3.5	20%	20%	20%	20%	19%	21%	23%	23%	24%	23%	23%

<sup>1</sup>Time-to-Degree is reported in elapsed quarters from first enrollment date to graduation. Only the records of students who enter UCSD in the Fall quarter are included in time-to-degree calculations. An academic year is defined as three quarters; twelve quarters equal four years. Summer degrees are combined with fall degrees and represent one quarter.



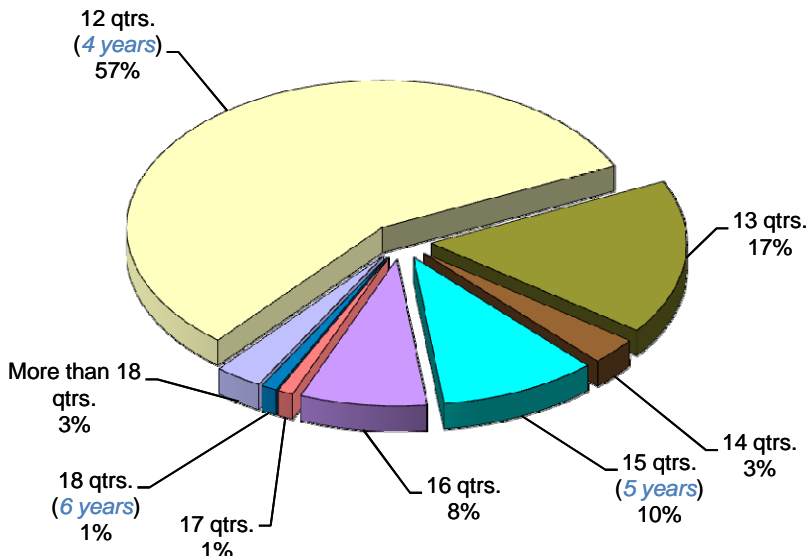
# Nominal Time-to-Degree: 2007/2008

Fifty-seven percent of first-time freshmen earning a bachelor's degree at UCSD did so within 4.3 years; almost, three-quarters (74%) graduated within 13 quarters or just over 4 years, 87% within 5 years, and 97% within 6 years (18 quarters).

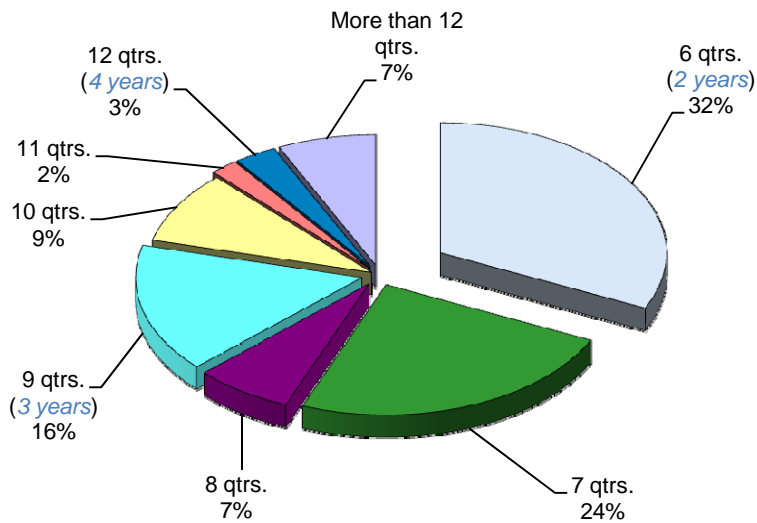
**First-Time Freshmen**

*Cumulative Frequency:*

57% graduated within 12 qtrs.  
 74% graduated within 13 qtrs.  
 77% graduated within 14 qtrs.  
 87% graduated within 15 qtrs.  
 95% graduated within 16 qtrs.  
 96% graduated within 17 qtrs.  
 97% graduated within 18 qtrs.



On average, transfer students took 2.7 years to complete their bachelor degree requirements at UCSD. Over three-quarters (79%) graduated within 3 years (9 quarters), and almost one-third (32%) graduated within 2 years (6 quarters).



**Community College Transfer**

*Cumulative Frequency:*

32% graduated within 6 qtrs.  
 56% graduated within 7 qtrs.  
 63% graduated within 8 qtrs.  
 79% graduated within 9 qtrs.  
 88% graduated within 10 qtrs.  
 90% graduated within 11 qtrs.  
 93% graduated within 12 qtrs.



# Characteristics of Bachelor Degree Recipients: 2007/2008

Social science majors account for approximately 48% of the 2007/2008 undergraduate degree recipients.

Approximately, 64% of the undergraduate degree recipients graduated with GPA of 3.0 ('B') or higher. Approximately, 23% graduated with a GPA of 'B+' or higher.

Student Characteristics	N	%	GPA Mean	Academic Profile		Units Mean	Time-to-Degree	
				% GPA 3.0 - 3.5	% GPA ≥ 3.5		Freshmen Mean	C.C. Transfer <sup>2</sup> Mean
<b>Gender</b>								
Female	2,847	53.3%	3.17	42.6%	24.3%	208	12.6	7.7
Male	2,490	46.7%	3.10	40.0%	20.7%	214	13.3	8.4
<b>Ethnicity</b>								
African Am.	55	1.0%	3.00	52.7%	7.3%	210	13.4	9.4
Asian	1,933	36.2%	3.08	40.2%	17.7%	213	13.1	8.1
Mexican Am.	386	7.2%	2.99	36.5%	13.7%	206	13.5	8.7
Filipino	256	4.8%	3.02	33.2%	18.4%	208	13.0	8.4
Latino	127	2.4%	3.15	40.2%	26.8%	209	13.2	7.9
Native Am.	21	0.4%	3.30	23.8%	47.6%	217	12.8	10.4
Caucasian	1,770	33.2%	3.25	43.2%	29.9%	209	12.8	7.8
Other	789	14.8%	3.17	45.0%	23.8%	212	12.3	8.2
<b>Disciplinary Area</b>								
Arts	232	4.3%	3.35	46.6%	37.1%	213	13.8	8.5
Humanities	291	5.5%	3.25	45.4%	30.9%	211	12.7	8.1
Engineering	763	14.3%	3.12	39.6%	20.2%	235	13.7	10.2
Science/Math	360	6.7%	3.10	37.5%	23.6%	219	13.4	8.5
Biology	1,113	20.9%	3.15	38.8%	24.0%	215	12.8	7.9
Social Science	2,577	48.3%	3.12	42.6%	20.4%	201	12.7	7.5
DbI/Special	1	0.0%	3.40	100.0%	0.0%	201	--	10.0
<b>College</b>								
Revelle	854	16.0%	3.09	38.9%	19.8%	220	13.1	9.1
Muir	1,031	19.3%	3.19	41.1%	27.4%	209	12.7	7.9
Marshall	1,001	18.8%	3.12	41.5%	21.0%	206	13.1	8.1
Warren	1,125	21.1%	3.11	39.9%	21.3%	210	12.9	8.2
Roosevelt	818	15.3%	3.17	43.8%	23.7%	211	12.9	8.1
Sixth	508	9.5%	3.17	45.1%	22.2%	211	12.9	7.0
<b>School Type</b>								
High School	3,567	66.8%	3.18	43.2%	24.8%	213	12.9	--
2yr College	1,643	30.8%	3.04	37.1%	18.0%	206	--	8.1
4yr College/Univ.	81	1.5%	3.18	48.1%	19.8%	210	--	--
Unknown	46	0.9%	3.17	37.0%	28.3%	212	--	--
<b>First Generation College Status</b>								
First Generation	1,429	26.8%	3.05	40.8%	15.6%	209	13.1	8.3
Not First Generation	3,908	73.2%	3.17	41.6%	25.2%	212	12.9	8.0
<b>Income</b>								
High: > \$98,401	1,192	22.3%	3.20	43.1%	25.8%	212	12.6	7.7
Medium High: \$65,601 - \$98,400	647	12.1%	3.15	43.6%	23.0%	211	12.9	8.0
Medium Low: \$32,801 - \$65,600	1,006	18.8%	3.08	41.1%	17.7%	209	13.2	8.2
Low: < \$32,800	1,006	18.8%	3.04	39.9%	16.2%	211	13.3	8.7
Missing/Undeclared	1,486	27.8%	3.19	40.2%	27.6%	211	12.7	8.0
<b>Total Population</b>	<b>5,337</b>	<b>100.0%</b>	<b>3.14</b>	<b>41.4%</b>	<b>22.6%</b>	<b>211</b>	<b>12.9</b>	<b>8.1</b>

<sup>2</sup> For Transfer students, time-to-degree is calculated only for those students who matriculate from a two-year community college (C.C.). The typical community college transfer student enters UCSD with 90 units of transferable academic credit.

On average, first-time freshmen take, approximately, four years (13 quarters) to graduate. Community College transfer students tend to graduate in just over three years or 8 quarters.



## Profile of Bachelor Degree Recipients Majoring in the Arts: 2007/2008



One-half (50%) of the students graduating with a degree in arts were female and one-half were male.

Muir College awarded the largest number of bachelor's degrees in arts compared to the other five colleges.

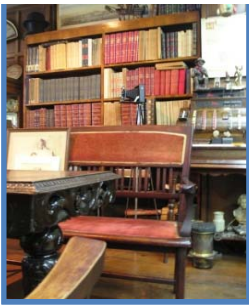
Relative to other disciplinary areas, a larger percentage (84%) of arts majors graduated with a GPA of 'B' or higher. The average GPA for arts majors was 3.35, respectively.

Student Characteristics	N	%	GPA Mean	Academic Profile % GPA		Units Mean	Time-to-Degree	
				3.0 - 3.5	% GPA ≥ 3.5		Freshmen Mean	C.C. Transfer Mean
<b>Gender</b>								
Female	117	50.4%	3.39	40.2%	43.6%	214	13.3	7.9
Male	115	49.6%	3.30	53.0%	30.4%	212	14.5	8.9
<b>Ethnicity</b>								
African Am.	3	1.3%	2.89	66.7%	0.0%	206	16.0	9.0
Asian	65	28.0%	3.28	50.8%	26.2%	217	14.0	8.5
Mexican Am.	14	6.0%	3.24	64.3%	21.4%	210	14.3	8.4
Filipino	13	5.6%	3.40	38.5%	53.8%	205	13.0	8.4
Latino	7	3.0%	3.02	42.9%	14.3%	224	14.2	13.0
Native Am.	2	0.9%	3.71	0.0%	100.0%	190	--	5.5
Caucasian	100	43.1%	3.42	40.0%	48.0%	213	14.0	8.1
Other	28	12.1%	3.35	57.1%	28.6%	210	11.6	9.4
<b>College</b>								
Revelle	21	9.1%	3.15	71.4%	4.8%	223	15.4	10.0
Muir	62	26.7%	3.44	35.5%	53.2%	213	13.7	8.4
Marshall	25	10.8%	3.26	44.0%	32.0%	209	15.4	8.6
Warren	38	16.4%	3.28	63.2%	21.1%	213	13.6	9.3
Roosevelt	30	12.9%	3.21	33.3%	30.0%	222	14.0	11.8
Sixth	56	24.1%	3.46	46.4%	48.2%	206	12.5	7.2
<b>School Type</b>								
High School	127	54.7%	3.27	47.2%	28.3%	216	13.8	--
2yr College	102	44.0%	3.44	45.1%	48.0%	210	--	8.5
4yr College/Univ.	2	0.9%	3.26	50.0%	50.0%	210	--	--
Unknown	1	0.4%	3.42	100.0%	0.0%	204	--	--
<b>First Generation College Status</b>								
First Generation	52	22.4%	3.26	57.7%	25.0%	213	13.8	9.7
Not First Generation	180	77.6%	3.37	43.3%	40.6%	213	13.8	8.1
<b>Income</b>								
High: > \$98,401	47	20.3%	3.42	36.2%	51.1%	220	13.9	7.4
Medium High: \$65,601 - \$98,400	32	13.8%	3.38	40.6%	43.8%	214	13.4	9.1
Medium Low: \$32,801 - \$65,600	41	17.7%	3.25	58.5%	22.0%	209	13.7	7.9
Low: < \$32,800	41	17.7%	3.21	56.1%	17.1%	215	14.3	9.8
Missing/Undeclared	71	30.6%	3.41	43.7%	45.1%	209	13.4	8.8
<b>Total Arts</b>	<b>232</b>	<b>100.0%</b>	<b>3.35</b>	<b>46.6%</b>	<b>37.1%</b>	<b>213</b>	<b>13.8</b>	<b>8.5</b>

\* Five or fewer cases.

### Bachelor Degrees in the Arts: Trends Profile - 1997/1998 to 2006/2007

Student Characteristics	N	%	GPA Mean	Academic Profile % GPA		Units Mean	Time-to-Degree	
				3.0 - 3.5	% GPA ≥ 3.5		Freshmen Mean	C.C. Transfer Mean
<b>Award Year</b>								
2006/2007	257	100.0%	3.35	51%	34%	211	13.9	8.3
2005/2006	280	100.0%	3.36	49%	38%	208	13.4	8.2
2004/2005	296	100.0%	3.29	52%	30%	208	13.4	8.1
2003/2004	281	100.0%	3.34	44%	38%	211	13.8	8.0
2002/2003	300	100.0%	3.27	52%	26%	207	13.9	8.1
2001/2002	236	100.0%	3.25	52%	25%	202	13.6	8.5
2000/2001	214	100.0%	3.30	51%	31%	206	13.5	8.1
1999/2000	147	100.0%	3.26	47%	28%	205	13.4	8.4
1998/1999	156	100.0%	3.26	60%	23%	204	13.5	7.7
1997/1998	123	100.0%	3.28	56%	28%	210	13.6	8.4



## Profile of Bachelor Degree Recipients Majoring in the Humanities: 2007/2008

Student Characteristics	N	%	Academic Profile				Time-to-Degree	
			GPA Mean	% GPA 3.0 - 3.5	% GPA ≥ 3.5	Units Mean	Freshmen Mean	C.C. Transfer Mean
<b>Gender</b>								
Female	174	59.8%	3.30	46.0%	33.9%	214	12.7	8.4
Male	117	40.2%	3.19	44.4%	26.5%	204	12.8	7.9
<b>Ethnicity</b>								
African Am.	2	0.7%	2.81	0.0%	0.0%	202	--	6.5
Asian	47	16.2%	3.19	46.8%	25.5%	224	13.5	8.7
Mexican Am.	29	10.0%	3.12	55.2%	13.8%	202	13.9	8.6
Filipino	16	5.5%	3.09	50.0%	12.5%	208	12.3	11.1
Latino	7	2.4%	3.26	57.1%	28.6%	206	14.3	8.0
Native Am.	2	0.7%	3.34	100.0%	0.0%	266	--	11.0
Caucasian	146	50.2%	3.32	42.5%	37.0%	210	12.4	7.7
Other	42	14.4%	3.26	42.9%	38.1%	203	12.2	7.1
<b>College</b>								
Revelle	28	9.6%	3.24	53.6%	25.0%	216	12.5	19.0
Muir	72	24.7%	3.28	48.6%	34.7%	211	12.7	8.2
Marshall	53	18.2%	3.19	52.8%	20.8%	205	12.6	7.4
Warren	49	16.8%	3.19	28.6%	34.7%	206	12.9	8.0
Roosevelt	68	23.4%	3.31	44.1%	35.3%	216	12.9	9.3
Sixth	21	7.2%	3.30	47.6%	28.6%	211	12.6	7.3
<b>School Type</b>								
High School	178	61.2%	3.32	49.4%	34.3%	215	12.7	--
2yr College	102	35.1%	3.14	38.2%	25.5%	202	--	8.1
4yr College/Univ.	5	1.7%	3.40	40.0%	40.0%	219	--	--
Unknown	6	2.1%	3.15	50.0%	16.7%	207	--	--
<b>First Generation College Status</b>								
First Generation	66	22.7%	3.19	47.0%	28.8%	208	14.0	7.1
Not First Generation	225	77.3%	3.27	44.9%	31.6%	211	12.4	8.5
<b>Income</b>								
High: > \$98,401	74	25.4%	3.28	54.1%	25.7%	211	12.5	8.0
Medium High: \$65,601 - \$98,400	34	11.7%	3.26	50.0%	29.4%	213	13.1	9.9
Medium Low: \$32,801 - \$65,600	49	16.8%	3.23	38.8%	28.6%	209	13.3	7.7
Low: < \$32,800	39	13.4%	3.17	48.7%	25.6%	215	13.6	8.3
Missing/Undeclared	95	32.6%	3.28	38.9%	38.9%	209	12.0	7.8
<b>Total Humanities</b>	<b>291</b>	<b>100.0%</b>	<b>3.25</b>	<b>45.4%</b>	<b>30.9%</b>	<b>211</b>	<b>12.7</b>	<b>8.1</b>

\* Five or fewer cases.

## Bachelor Degrees in the Humanities: Trends Profile - 1997/1998 to 2006/2007

Student Characteristics	N	%	Academic Profile				Time-to-Degree	
			GPA Mean	% GPA 3.0 - 3.5	% GPA ≥ 3.5	Units Mean	Freshmen Mean	C.C. Transfer Mean
<b>Award Year</b>								
2006/2007	262	100.0%	3.19	45%	24%	205	13.0	7.7
2005/2006	280	100.0%	3.25	46%	29%	204	12.8	8.2
2004/2005	259	100.0%	3.24	45%	29%	203	12.8	8.4
2003/2004	253	100.0%	3.22	47%	28%	204	13.1	7.7
2002/2003	226	100.0%	3.17	43%	24%	205	13.4	8.0
2001/2002	244	100.0%	3.16	43%	22%	203	13.7	8.3
2000/2001	273	100.0%	3.14	48%	19%	202	13.6	7.6
1999/2000	256	100.0%	3.17	44%	24%	201	13.5	8.6
1998/1999	312	100.0%	3.19	45%	27%	201	13.4	9.2
1997/1998	291	100.0%	3.18	44%	26%	202	13.5	8.6

The majority (60%) of students earning a bachelor's degree in humanities were female.

Muir College awarded the largest number of humanities degrees followed by Roosevelt College.

Approximately, 76% of humanities majors graduated with a GPA of 'B' or higher; the mean GPA was 3.25, respectively.

## Profile of Bachelor Degree Recipients Majoring in Engineering: 2007/2008



The majority (79%) of engineering degrees were awarded to males.

Warren College continues to award the largest proportion (33%) of bachelor's degrees in engineering.

Approximately, 60% of engineering majors graduated with a GPA of 'B' or higher; the average GPA for graduating engineering students was 3.12, respectively.

Student Characteristics	N		Academic Profile				Time-to-Degree	
	N	%	GPA Mean	% GPA 3.0 - 3.5	% GPA ≥ 3.5	Units Mean	Freshmen Mean	C.C. Transfer Mean
<b>Gender</b>								
Female	159	20.8%	3.08	34.0%	19.5%	236	13.3	10.8
Male	604	79.2%	3.13	41.1%	20.4%	234	13.8	10.1
<b>Ethnicity</b>								
African Am.	6	0.8%	2.82	50.0%	0.0%	229	12.8	13.0
Asian	319	41.8%	3.08	41.1%	16.9%	236	13.7	10.6
Mexican Am.	51	6.7%	2.88	37.3%	3.9%	229	14.4	10.1
Filipino	28	3.7%	2.85	28.6%	7.1%	228	13.8	11.3
Latino	12	1.6%	3.13	58.3%	16.7%	237	14.6	9.0
Native Am.	3	0.4%	3.25	33.3%	33.3%	228	13.5	9.0
Caucasian	223	29.2%	3.22	42.2%	26.0%	233	13.7	9.9
Other	121	15.9%	3.19	32.2%	28.9%	238	13.3	9.5
<b>College</b>								
Revelle	125	16.4%	3.09	45.6%	12.8%	244	14.0	10.9
Muir	106	13.9%	3.20	37.7%	29.2%	236	13.6	10.2
Marshall	113	14.8%	3.12	41.6%	20.4%	232	13.8	10.8
Warren	254	33.3%	3.10	35.8%	21.3%	228	13.2	10.1
Roosevelt	69	9.0%	3.06	43.5%	15.9%	242	14.8	9.2
Sixth	96	12.6%	3.13	38.5%	19.8%	236	13.7	8.1
<b>School Type</b>								
High School	516	67.6%	3.16	40.3%	23.1%	234	13.7	--
2yr College	232	30.4%	3.01	38.4%	13.8%	236	--	10.2
4yr College/Univ.	9	1.2%	3.20	22.2%	22.2%	235	--	--
Unknown	6	0.8%	3.17	50.0%	16.7%	232	--	--
<b>First Generation College Status</b>								
First Generation	205	26.9%	3.03	40.0%	13.7%	232	13.8	10.6
Not First Generation	558	73.1%	3.15	39.4%	22.6%	236	13.7	10.0
<b>Income</b>								
High: > \$98,401	173	22.7%	3.14	41.0%	20.8%	238	13.5	10.7
Medium High: \$65,601 - \$98,400	80	10.5%	3.13	46.3%	15.0%	237	13.6	9.5
Medium Low: \$32,801 - \$65,600	140	18.3%	3.06	37.9%	16.4%	233	14.5	10.2
Low: < \$32,800	124	16.3%	3.03	38.7%	15.3%	233	14.1	11.2
Missing/Undeclared	246	32.2%	3.17	37.8%	26.0%	234	13.1	9.7
<b>Total Engineering</b>	763	100.0%	3.12	39.6%	20.2%	235	13.7	10.2

\* Five or fewer cases.

### Bachelor Degrees in Engineering: Trends Profile - 1997/1998 to 2006/2007

Student Characteristics	N		Academic Profile				Time-to-Degree	
	N	%	GPA Mean	% GPA 3.0 - 3.5	% GPA ≥ 3.5	Units Mean	Freshmen Mean	C.C. Transfer Mean
<b>Award Year</b>								
2006/2007	814	100.0%	3.11	38%	21%	234	13.9	9.7
2005/2006	933	100.0%	3.11	38%	20%	232	13.7	9.6
2004/2005	998	100.0%	3.14	41%	22%	230	13.4	9.3
2003/2004	654	100.0%	3.10	40%	19%	228	13.9	10.0
2002/2003	674	100.0%	3.11	38%	21%	227	13.9	9.8
2001/2002	563	100.0%	3.08	42%	16%	225	13.9	9.8
2000/2001	540	100.0%	3.10	43%	18%	224	13.8	9.6
1999/2000	533	100.0%	3.08	39%	17%	227	13.9	10.0
1998/1999	446	100.0%	3.13	41%	20%	228	14.2	9.9
1997/1998	402	100.0%	3.12	43%	19%	230	14.2	9.8

## Profile of Bachelor Degree Recipients Majoring in Science and Math: 2007/2008



The majority of science/math degrees were awarded to males (53%).

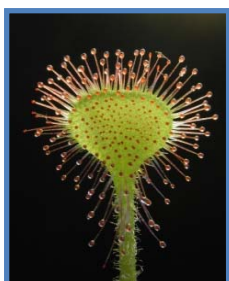
Approximately, 61% of science/math majors graduated with a GPA of 'B' or higher; twenty-four percent graduated with a GPA of 'B+' or higher.

Student Characteristics	N		Academic Profile				Time-to-Degree	
	N	%	GPA Mean	% GPA 3.0 - 3.5	% GPA ≥ 3.5	Units Mean	Freshmen Mean	C.C. Transfer Mean
<b>Gender</b>								
Female	170	47.2%	3.14	38.2%	27.1%	219	13.0	8.2
Male	190	52.8%	3.06	36.8%	20.5%	219	13.8	8.8
<b>Ethnicity</b>								
African Am.	5	1.4%	2.96	20.0%	20.0%	218	--	11.3
Asian	145	40.3%	3.02	38.6%	17.2%	222	13.6	8.3
Mexican Am.	20	5.6%	2.99	25.0%	20.0%	206	14.1	8.8
Filipino	14	3.9%	2.83	21.4%	14.3%	223	13.2	9.3
Latino	3	0.8%	3.17	0.0%	33.3%	239	15.0	--
Native Am.	3	0.8%	3.03	33.3%	33.3%	229	13.0	11.5
Caucasian	126	35.0%	3.25	38.9%	34.1%	217	13.3	8.3
Other	44	12.2%	3.07	45.5%	18.2%	218	12.3	8.5
<b>College</b>								
Revelle	88	24.4%	3.13	26.1%	31.8%	226	13.3	8.3
Muir	70	19.4%	3.14	35.7%	28.6%	217	13.4	7.6
Marshall	47	13.1%	3.03	44.7%	12.8%	215	13.1	9.6
Warren	93	25.8%	3.11	45.2%	20.4%	213	13.5	8.6
Roosevelt	31	8.6%	3.01	38.7%	19.4%	224	13.2	9.1
Sixth	31	8.6%	3.09	38.7%	19.4%	221	13.9	8.0
<b>School Type</b>								
High School	229	63.6%	3.11	37.1%	24.5%	225	13.4	--
2yr College	124	34.4%	3.09	37.1%	22.6%	208	--	8.5
4yr College/Univ.	2	0.6%	2.83	50.0%	0.0%	228	--	--
Unknown	5	1.4%	3.22	60.0%	20.0%	234	--	--
<b>First Generation College Status</b>								
First Generation	101	28.1%	3.04	42.6%	16.8%	218	13.8	8.4
Not First Generation	259	71.9%	3.12	35.5%	26.3%	219	13.3	8.6
<b>Income</b>								
High: > \$98,401	74	20.6%	3.12	40.5%	25.7%	224	13.2	8.2
Medium High: \$65,601 - \$98,400	48	13.3%	3.03	39.6%	16.7%	215	13.1	8.3
Medium Low: \$32,801 - \$65,600	67	18.6%	2.98	34.3%	17.9%	215	13.6	9.4
Low: < \$32,800	72	20.0%	3.09	33.3%	25.0%	224	13.6	9.0
Missing/Undeclared	99	27.5%	3.21	39.4%	28.3%	216	13.3	8.2
<b>Total Science/Math</b>	<b>360</b>	<b>100.0%</b>	<b>3.10</b>	<b>37.5%</b>	<b>23.6%</b>	<b>219</b>	<b>13.4</b>	<b>8.5</b>

\* Five or fewer cases.

## Bachelor Degrees in Science and Math: Trends Profile - 1997/1998 to 2006/2007

Student Characteristics	N		Academic Profile				Time-to-Degree	
	N	%	GPA Mean	% GPA 3.0 - 3.5	% GPA ≥ 3.5	Units Mean	Freshmen Mean	C.C. Transfer Mean
<b>Award Year</b>								
2006/2007	339	100.0%	3.07	39.5%	20.1%	217	13.3	8.4
2005/2006	310	100.0%	3.15	41.3%	23.5%	218	13.1	8.4
2004/2005	327	100.0%	3.10	35.8%	23.9%	220	13.5	8.7
2003/2004	259	100.0%	3.08	37.1%	22.0%	216	13.5	8.4
2002/2003	252	100.0%	3.08	33.3%	23.0%	214	13.4	8.4
2001/2002	242	100.0%	3.08	38.0%	20.7%	215	13.2	9.6
2000/2001	203	100.0%	3.09	33.5%	24.1%	216	13.4	9.3
1999/2000	207	100.0%	3.09	39.1%	21.3%	215	13.6	9.1
1998/1999	187	100.0%	3.13	38.5%	22.5%	216	14.1	8.6
1997/1998	172	100.0%	3.15	36.6%	25.6%	218	13.8	9.5



## Profile of Bachelor Degree Recipients Majoring in Biology: 2007/2008

The majority of biology degrees were awarded to females (59%).

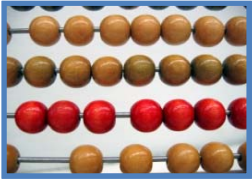
Student Characteristics	N	%	Academic Profile				Time-to-Degree	
			GPA Mean	% GPA 3.0 - 3.5	% GPA ≥ 3.5	Units Mean	Freshmen Mean	C.C. Transfer Mean
<b>Gender</b>								
Female	652	58.6%	3.14	38.2%	23.6%	215	12.8	7.7
Male	461	41.4%	3.16	39.7%	24.5%	216	12.8	8.2
<b>Ethnicity</b>								
African Am.	6	0.5%	3.17	50.0%	16.7%	225	12.3	--
Asian	499	44.8%	3.10	35.9%	21.8%	217	13.0	7.6
Mexican Am.	47	4.2%	2.99	21.3%	21.3%	210	14.0	8.2
Filipino	64	5.8%	3.09	29.7%	25.0%	212	12.4	7.9
Latino	20	1.8%	3.22	35.0%	40.0%	219	12.7	9.2
Native Am.	6	0.5%	3.17	16.7%	33.3%	206	13.0	6.0
Caucasian	282	25.3%	3.25	42.9%	28.7%	213	12.7	7.9
Other	189	17.0%	3.16	48.7%	21.2%	215	12.2	8.3
<b>College</b>								
Revelle	303	27.2%	3.13	37.6%	21.8%	219	12.8	8.1
Muir	172	15.5%	3.23	38.4%	30.8%	215	12.3	7.6
Marshall	202	18.1%	3.11	35.1%	22.8%	210	12.8	8.0
Warren	240	21.6%	3.15	39.2%	24.6%	214	12.9	8.0
Roosevelt	130	11.7%	3.16	41.5%	23.8%	217	13.1	7.8
Sixth	66	5.9%	3.15	50.0%	18.2%	215	12.8	7.3
<b>School Type</b>								
High School	827	74.3%	3.21	41.0%	27.3%	218	12.8	--
2yr College	267	24.0%	2.96	30.7%	15.0%	207	--	7.9
4yr College/Univ.	16	1.4%	3.07	56.3%	6.3%	207	--	--
Unknown	3	0.3%	3.11	66.7%	0.0%	229	--	--
<b>First Generation College Status</b>								
First Generation	285	25.6%	3.05	36.8%	15.4%	215	13.1	8.3
Not First Generation	828	74.4%	3.18	39.5%	26.9%	215	12.7	7.7
<b>Income</b>								
High: > \$98,401	264	23.7%	3.25	43.9%	28.0%	214	12.3	7.5
Medium High: \$65,601 - \$98,400	141	12.7%	3.11	38.3%	23.4%	217	12.8	7.7
Medium Low: \$32,801 - \$65,600	211	19.0%	3.07	39.8%	17.5%	216	13.2	7.8
Low: < \$32,800	212	19.0%	3.08	33.5%	20.3%	216	13.0	8.5
Missing/Undeclared	285	25.6%	3.19	37.5%	28.1%	215	12.7	7.9
<b>Total Biology</b>	<b>1,113</b>	<b>100.0%</b>	<b>3.15</b>	<b>38.8%</b>	<b>24.0%</b>	<b>215</b>	<b>12.8</b>	<b>7.9</b>

\* Five or fewer cases.

## Bachelor Degrees in Biology: Trends Profile - 1997/1998 to 2006/2007

Student Characteristics	N	%	Academic Profile				Time-to-Degree	
			GPA Mean	% GPA 3.0 - 3.5	% GPA ≥ 3.5	Units Mean	Freshmen Mean	C.C. Transfer Mean
<b>Award Year</b>								
2006/2007	939	100.0%	3.17	38.0%	27.2%	215	12.8	8.1
2005/2006	906	100.0%	3.17	37.4%	26.7%	214	12.9	8.0
2004/2005	752	100.0%	3.14	39.1%	24.7%	213	12.9	8.6
2003/2004	661	100.0%	3.12	34.6%	24.5%	213	13.2	8.6
2002/2003	742	100.0%	3.13	38.9%	23.6%	211	13.2	8.6
2001/2002	715	100.0%	3.11	39.9%	22.4%	210	13.3	8.9
2000/2001	826	100.0%	3.10	36.8%	22.5%	210	13.1	9.1
1999/2000	895	100.0%	3.09	36.4%	23.0%	210	13.3	9.1
1998/1999	973	100.0%	3.09	34.9%	22.0%	207	13.2	8.6
1997/1998	868	100.0%	3.10	38.5%	21.8%	208	13.4	8.5

## Profile of Bachelor Degree Recipients Majoring in the Social Sciences: 2007/2008



The majority of social science degree recipients were female (61%).

Approximately, 63% of social science majors graduated with a GPA of 3.0 or higher; twenty percent graduated with a GPA of 3.5 or higher.

Student Characteristics	N		Academic Profile				Time-to-Degree	
	N	%	GPA Mean	% GPA 3.0 - 3.5	% GPA ≥ 3.5	Units Mean	Freshmen Mean	C.C. Transfer Mean
<b>Gender</b>								
Female	1,574	61.1%	3.17	45.5%	22.3%	201	12.4	7.3
Male	1,003	38.9%	3.04	38.0%	17.4%	200	13.2	7.6
<b>Ethnicity</b>								
African Am.	33	1.3%	3.03	60.6%	6.1%	203	13.6	8.3
Asian	858	33.3%	3.05	41.5%	14.7%	200	12.8	7.3
Mexican Am.	225	8.7%	2.99	36.4%	13.3%	200	13.0	8.5
Filipino	121	4.7%	3.00	34.7%	14.9%	200	13.3	7.4
Latino	78	3.0%	3.14	38.5%	25.6%	199	12.8	7.3
Native Am.	5	0.2%	3.48	0.0%	80.0%	209	11.5	14.3
Caucasian	892	34.6%	3.22	44.5%	27.5%	201	12.5	7.2
Other	365	14.2%	3.15	46.6%	22.2%	202	12.0	7.6
<b>College</b>								
Revelle	289	11.2%	3.03	37.4%	17.6%	210	13.1	9.1
Muir	548	21.3%	3.14	42.9%	21.9%	199	12.5	7.5
Marshall	561	21.8%	3.11	42.2%	20.7%	197	13.0	7.5
Warren	451	17.5%	3.08	40.8%	18.4%	198	12.5	7.3
Roosevelt	490	19.0%	3.18	45.3%	23.1%	203	12.5	7.6
Sixth	238	9.2%	3.13	46.6%	18.1%	200	12.5	6.4
<b>School Type</b>								
High School	1,690	65.6%	3.16	45.0%	22.8%	202	12.7	--
2yr College	815	31.6%	3.01	37.7%	14.7%	197	--	7.5
4yr College/Univ.	47	1.8%	3.20	51.1%	21.3%	204	--	--
Unknown	25	1.0%	3.16	20.0%	40.0%	203	--	--
<b>First Generation College Status</b>								
First Generation	720	27.9%	3.03	40.6%	14.2%	198	12.8	7.4
Not First Generation	1,857	72.1%	3.15	43.3%	22.8%	202	12.6	7.5
<b>Income</b>								
High: > \$98,401	560	21.7%	3.18	42.9%	24.3%	202	12.3	7.2
Medium High: \$65,601 - \$98,400	312	12.1%	3.16	45.5%	23.1%	200	12.6	7.3
Medium Low: \$32,801 - \$65,600	498	19.3%	3.08	42.2%	16.7%	199	12.8	7.7
Low: < \$32,800	517	20.1%	3.00	41.6%	12.8%	201	13.1	7.9
Missing/Undeclared	690	26.8%	3.16	42.0%	24.5%	201	12.6	7.4
<b>Total Social Sciences</b>	<b>2,577</b>	<b>100.0%</b>	<b>3.12</b>	<b>42.6%</b>	<b>20.4%</b>	<b>201</b>	<b>12.7</b>	<b>7.5</b>

\* Five or fewer cases.

## Bachelor Degrees in Social Sciences: Trends Profile - 1997/1998 to 2006/2007

Student Characteristics	N		Academic Profile				Time-to-Degree	
	N	%	GPA Mean	% GPA 3.0 - 3.5	% GPA ≥ 3.5	Units Mean	Freshmen Mean	C.C. Transfer Mean
<b>Award Year</b>								
2006/2007	2,446	100.0%	3.12	42%	21%	201	12.8	7.0
2005/2006	2,486	100.0%	3.15	42%	22%	200	12.6	7.3
2004/2005	2,406	100.0%	3.12	43%	20%	199	12.8	7.1
2003/2004	2,022	100.0%	3.14	42%	22%	199	13.0	7.3
2002/2003	2,051	100.0%	3.10	42%	19%	198	13.0	7.5
2001/2002	1,916	100.0%	3.09	45%	17%	197	13.0	7.7
2000/2001	1,649	100.0%	3.11	44%	18%	197	12.8	7.8
1999/2000	1,494	100.0%	3.09	42%	18%	196	13.2	8.1
1998/1999	1,494	100.0%	3.08	42%	17%	195	12.9	7.9
1997/1998	1,362	100.0%	3.06	44%	15%	197	12.9	7.9



*Degrees Conferred* is an annual publication of the  
Office of Student Research & Information,  
Student Affairs, 858-534-2382.

This document is also available on the  
World Wide Web at:  
[studentresearch.ucsd.edu](http://studentresearch.ucsd.edu)